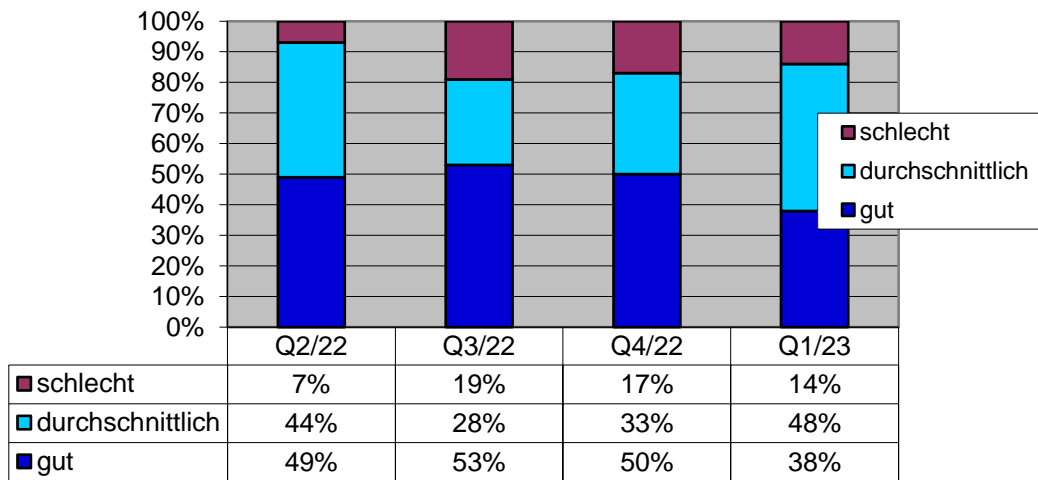


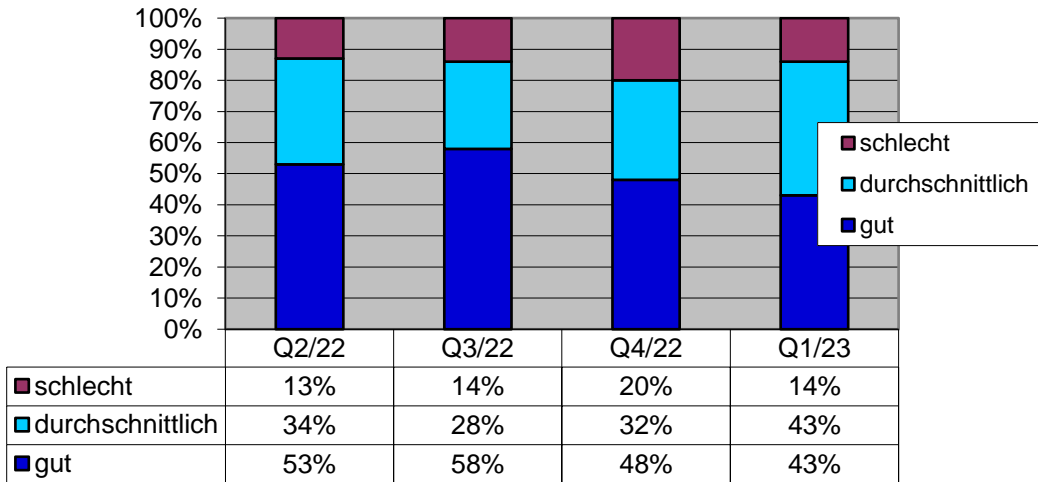
# KONJUNKTURUMFRAGE DER IV SALZBURG

## 2. Quartal 2022 - 1. Quartal 2023

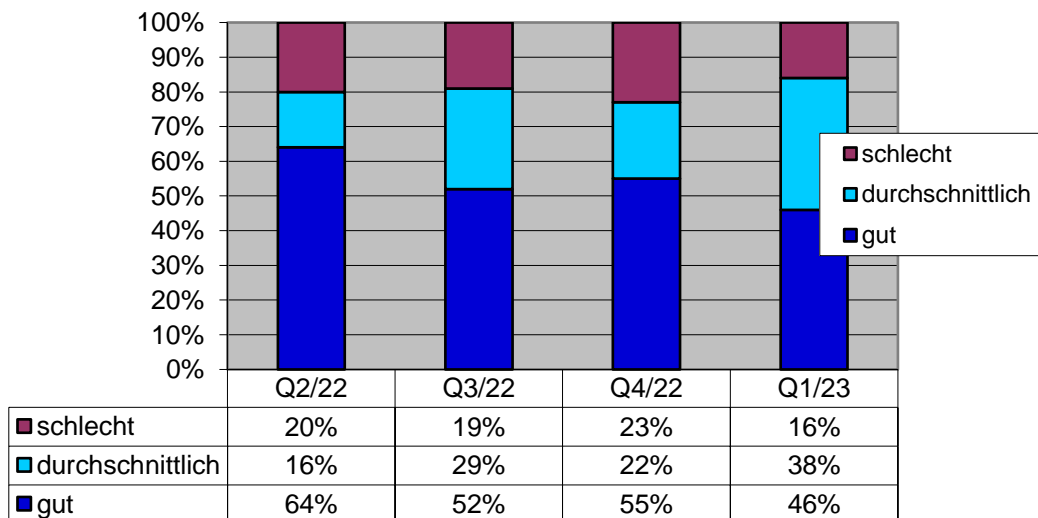
### Geschäftslage derzeit



### Auftragsbestand derzeit



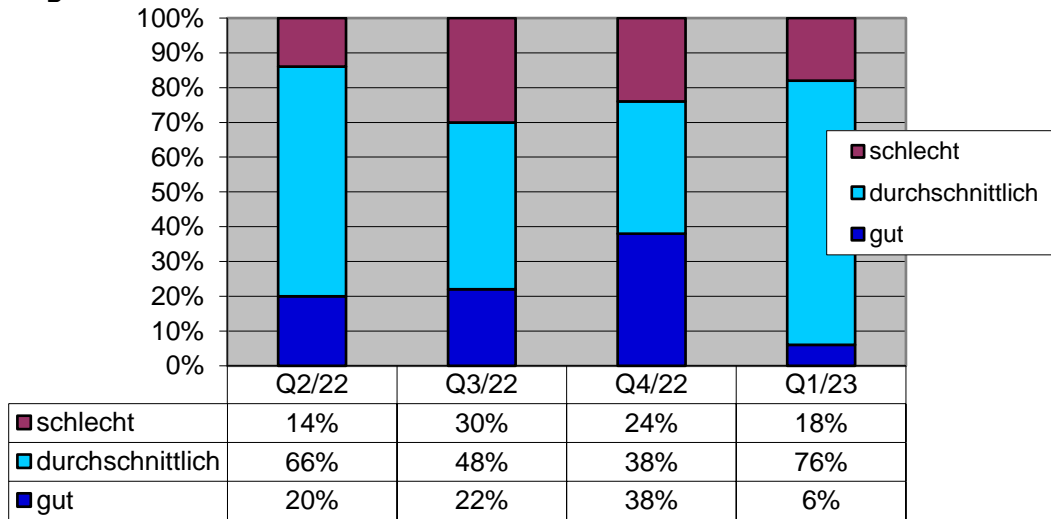
### Auslandsaufträge derzeit



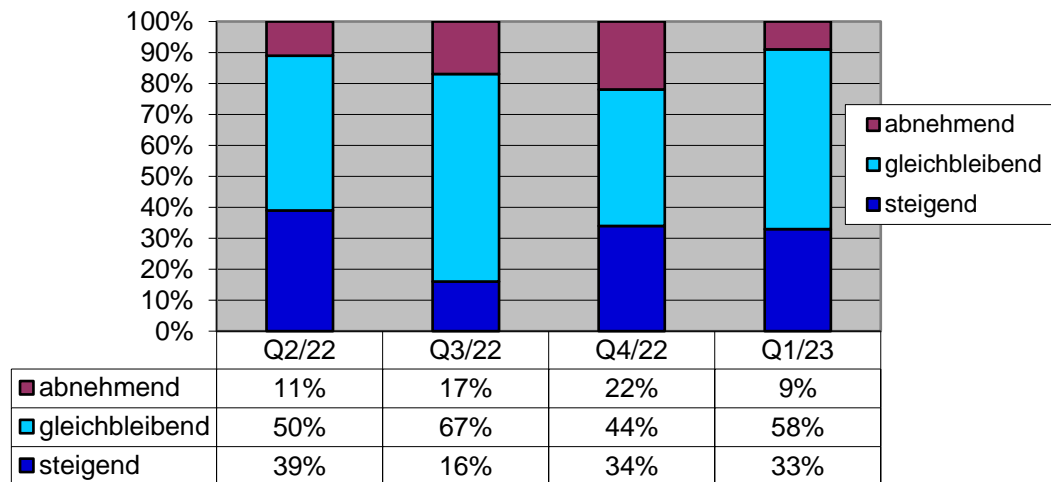
# KONJUNKTURUMFRAGE DER IV SALZBURG

## 2. Quartal 2022 - 1. Quartal 2023

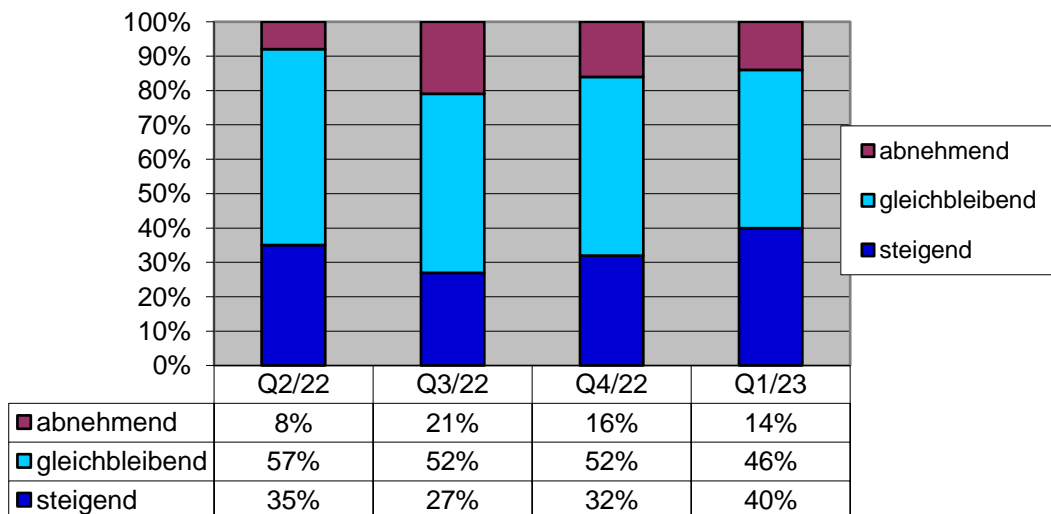
### Ertragsituation derzeit



### Auslastung Produktionskapazität in 3 Monaten



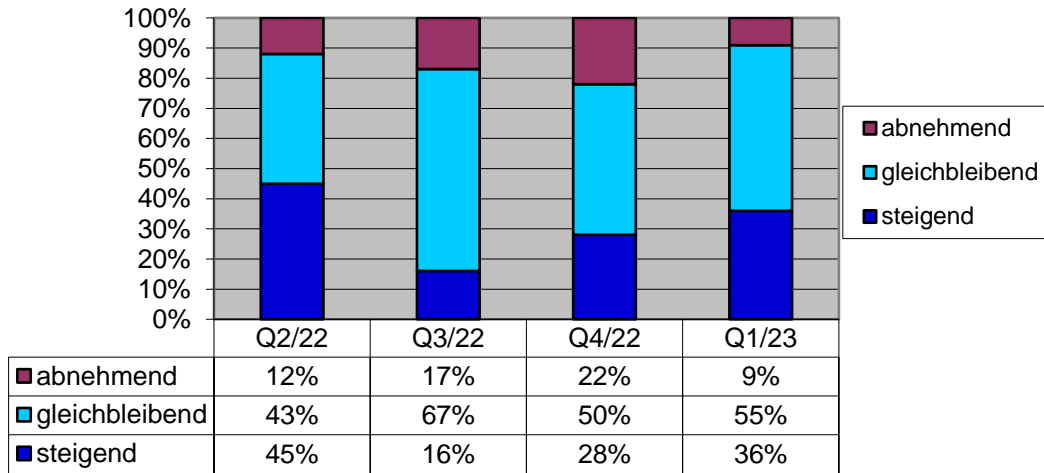
### Beschäftigtenstand in 3 Monaten



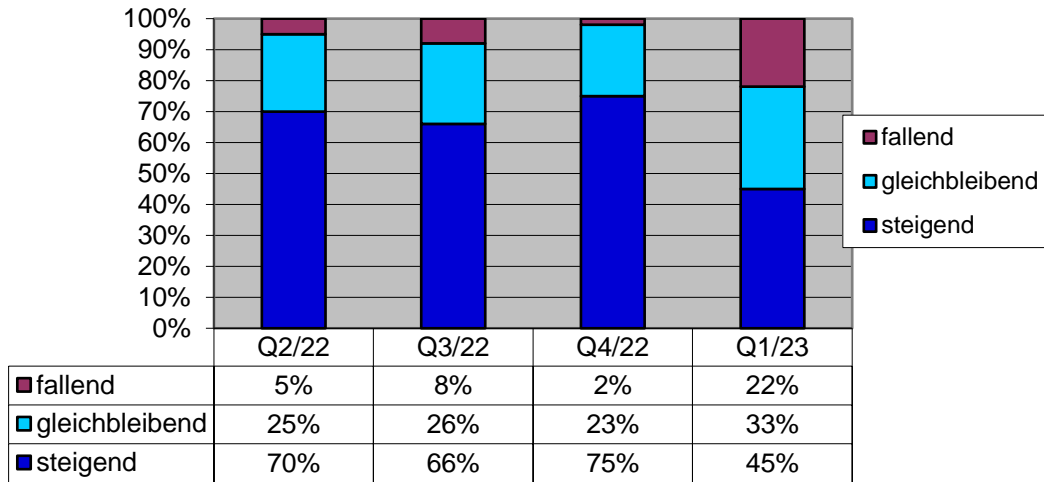
# KONJUNKTURUMFRAGE DER IV SALZBURG

## 2. Quartal 2022 - 1. Quartal 2023

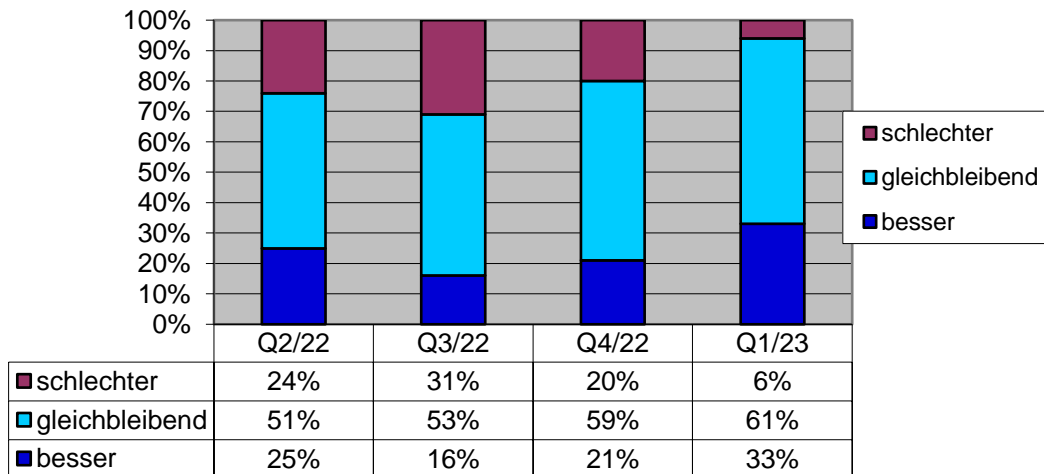
### Produktionstätigkeit in 3 Monaten



### Verkaufspreise in 3 Monaten



### Ertragsituation in 6 Monaten



# KONJUNKTURUMFRAGE DER IV SALZBURG

## 2. Quartal 2022 - 1. Quartal 2023

### Geschäftslage in 6 Monaten

